



Personal Learning Plan



Personal Learning Plan

The **Personal Learning Plan** (PLP) aims to prepare students for SACE studies, by helping them to plan a successful learning program that will enable access to a range of post school options. The PLP at Brighton Secondary School is usually completed in Year 10 to assist with decision making about SACE subject choices and to demonstrate a student's preparedness for Senior School studies. It is a compulsory component of the SACE, and students must achieve a C grade or better to satisfactorily complete the SACE certificate.

Students demonstrate the concept of personal best within the contexts of self, community and global perspectives.

The 3 Components of the Personal Learning Plan

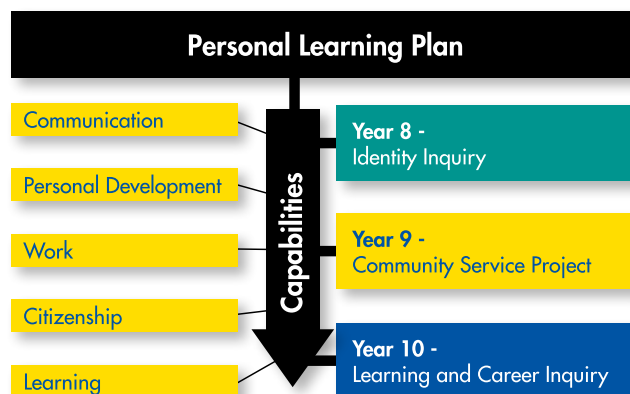
Year 8

The Personal Learning Plan in Year 8 focuses on the fertile question:

What shapes the way I think and feel about myself and others?

Students are involved a range of activities that culminate in a concluding performance that takes the form of a presentation to a panel. Student assessment is based on the capabilities:

- Communication
- Learning
- Personal Development



Year 9

The Personal Learning Plan in Year 9 focuses on the fertile question:

What is community service and how can we actively participate in it?

Students move from a focus on self to community and as a member of their homegroup become actively involved in a community service project. The project culminates in two concluding performances, which take the form of a team presentation and an individual interview with a panel. Student assessment is based on the capabilities:

- Communication
- Learning
- Personal Development
- Citizenship



Year 10

The Personal Learning Plan in Year 10 focuses on the fertile question:

What are my personal, learning and career goals?

Students produce a personal profile, carry out career research, participate in work experience and undertake a SACE course interview. The Year 10 component culminates in a folio and reflection that is assessed for SACE accreditation. Student assessment is based on the capabilities:

- Communication
- Learning
- Personal Development
- Citizenship
- Work

How the Personal Learning Plan is Delivered

The Personal Learning Plan is developed by the Student Services Team.

House Teams facilitate its delivery on a weekly basis and on dedicated focus days.

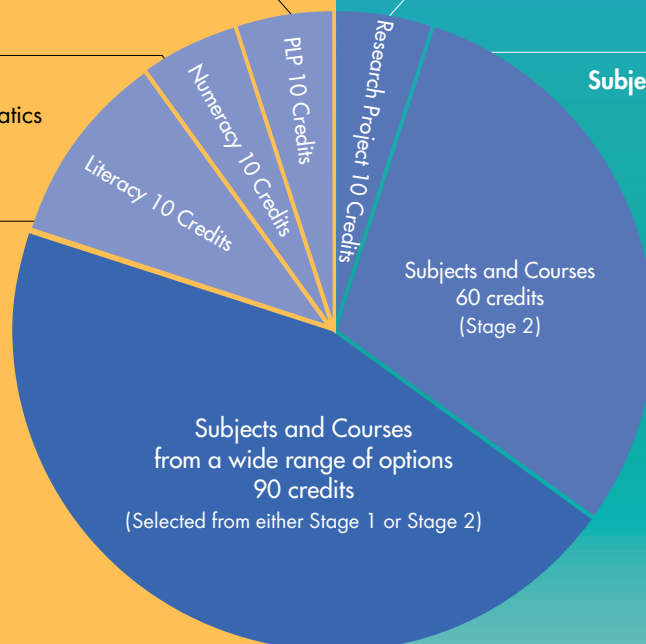
SACE Requirements

STAGE 1 (YEARS 10 AND 11)

Personal Learning Plan (compulsory)
10 Credits

Numeracy (compulsory)
from a range of Mathematics
subjects and courses
10 Credits

Literacy (compulsory)
from a range of English
subjects and courses
20 Credits



STAGE 2 (YEAR 12)

Research Project (compulsory)
10 Credits

Subjects and Courses (compulsory)
from a wide range of options
60 Credits

TOTAL SACE = 200 CREDITS



Government of South Australia

Department for Education and
Child Development



305 Brighton Road
North Brighton, SA 5048
Phone 618 8375 8200
Fax 618 8296 0949

www.brightonss.sa.edu.au

Department for Education and Child Development.
T/A South Australian Government Schools.
CRICOS Provider Number: 00018A

